

A shared courage. A common *good.*

2018 Impact Report





Dear friends of the SSM Health Foundation - St. Louis:

Since our beginning in 1872, SSM Health has been committed to providing the highest quality health care in our region to all patients from all circumstances. Our founding sisters left an incredible legacy. Their sacred ministry now has been entrusted to the organization's employees, physicians, and volunteers. As we continue to grow and evolve to better meet the needs of the communities we serve, SSM Health Foundation - St. Louis remains committed to carrying on our 145+ year heritage of healing through philanthropic and community efforts. SSM Health Foundation - St. Louis is *honored* to courageously serve the health care needs of our community by seeking financial support for our hospitals.

2018 brought significant milestones for the Foundation. **One of the largest was the unification of our hospital foundations to elevate community impact. Philanthropic efforts for SSM Health DePaul Hospital - St. Louis, SSM Health Saint Louis University Hospital, SSM Health St. Clare Hospital - Fenton, SSM Health St. Joseph Hospital - Lake Saint Louis, SSM Health St. Joseph Hospital - St. Charles, SSM Health St. Joseph Hospital - Wentzville, and SSM Health St. Mary's Hospital - St. Louis joined to create a cohesive community of supporters and health care professionals.**

Corporate leaders, community donors, and volunteers have stepped up to provide critical philanthropic support making an impact on health care in the communities we serve across our region. I am humbled by the significance of work and achievement over the past year.

- **Embarking on an \$11 million commitment to help build SSM Health Saint Louis University Hospital, a replacement hospital within the city of St. Louis.**
- Fulfilling 81 requests for programmatic support and community outreach.
- Hosting over 850 guests at three signature benefactor engagement events—raising funds for women's health initiatives, Destination DePaul campaign, and regional greatest needs.
- **Securing over \$4 million dollars in financial support through 2,600 generous benefactors.**

On the following pages you will learn about programs and initiatives your generous financial contributions support. You will be introduced to the people we serve and health care professionals whose expertise deliver hope and compassion.

I personally thank the SSM Health Foundation - St. Louis Board of Trustees for your strength and encouragement. Through our mission, we are compelled to advance our programs and facilities to address the health of our community. **On behalf of the Foundation, hospital teams and patients, I sincerely thank you for your generosity and support as together, we look forward to another year of building a healthier St. Louis.**

With gratitude,

A handwritten signature in black ink that reads "Paul Ross". The signature is written in a cursive, slightly slanted style.

Paul Ross, President
SSM Health Foundation - St. Louis

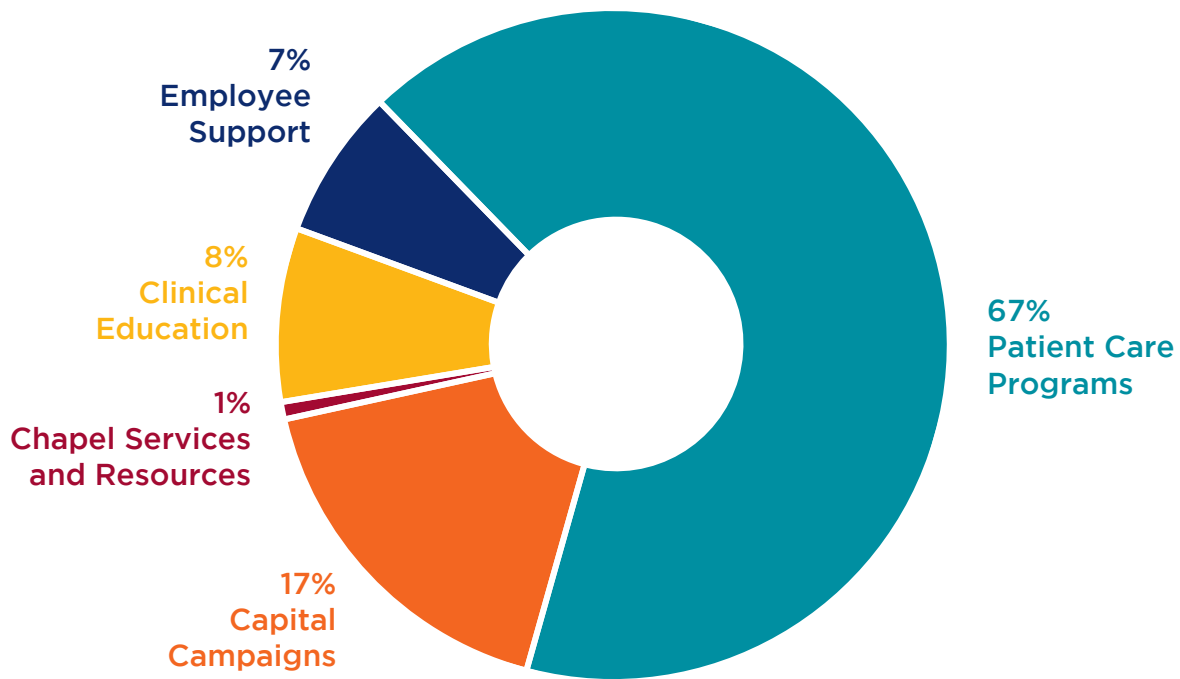
A legacy of *courage.*

We are inspired daily by the mission of our founding sisters. They began their ministry of healing with \$5 and a basket to collect donations for the needy and bring medical supplies to the sick.

Today it is the catalytic effort from our sponsors, donors, board, committee members, and volunteers who give time, talent, and treasure day after day—who lead by example—that galvanize a unified effort to serve the needs of our community in order to sustain our vitally important mission.

With your help, we have made a tremendous impact. It will take continued financial support, increased awareness, and impassioned individuals, corporations, and partners to raise the funds necessary to support ongoing need. We need your help in keeping the momentum. Together with our caregivers, our donors, and our community we are changing the health care landscape for a healthier tomorrow.

Through our exceptional health care services, we reveal the healing presence of God.



Your gifts in action in 2018.



“I began my involvement with SSM Health over 25 years ago when I first started providing design services at St. Joseph’s Health Center in St. Charles. In 2005, I was asked to join the SSM Health St. Joseph Health Center Foundation Board, later serving as its Chair. The evolution of SSM Health Foundation, especially in the last couple of years, has been incredible. Helping facilitate this group of hospital supporters to improve access and quality of health care in the St. Louis area has been a privilege. Today’s health care challenges clearly tell us we’ve got more work to do. I think we’re on the right path.”

— Stephen Smith, Board Chair

Board Leadership

Executive Committee

Stephen Smith,
Board Chair
Chief Executive Officer,
Lawrence Group
Architects, Inc.
Gregory Hesser,
Chair-Elect
President,
Alberici Constructors

Robert Koester,
Treasurer
Chief Financial Officer,
Murphy Company
Amparo Kollman-Moore,
Secretary
Principal,
AKM, LLC - International
Business Consulting

Values in *action.*

Board of Trustees

David Baker
Vice President,
Warrenton Oil Company

Michael Bowers
Chief Operating Officer,
SSM Health St. Louis

Darren Clay
President,
Clay Piping Systems, Inc.

Dr. Jerome Dwyer
President,
St. Louis Cardiology
Center, P.C.

Constance Gully
President & Chief
Executive Officer,
Parents as Teachers

Kevin Gunn
Principal,
Paladin Energy Strategies

James Hall
Regional Vice Chairman,
Enterprise Bank & Trust

J. Gregory Keller
Chief Executive Officer,
Renaissance Financial

Steven Lierman
Partner,
StoneBridge Senior Living

Derrick Martin
Region President,
iHeart Media St. Louis

John Meara
President,
Argent Capital Management

Michael Prost
Managing Partner,
Mueller Prost

Dr. Henry Randall
Executive Director,
Abdominal Transplant
Center,
SSM Health Saint Louis
University Hospital

Dr. William Schroer
Orthopedic Surgeon,
SSM Health DePaul Hospital

Anthony Soukenik
Attorney & Shareholder,
Sandberg, Phoenix & von
Gontard P.C.

Kirk Syberg
Owner
Syberg Family of Restaurants

Ex Officio

Travis Capers
President,
SSM Health
St. Mary’s Hospital

Tina Garrison
President,
SSM Health
St. Clare Hospital

Candace Jennings
Regional President,
SSM Health St. Louis

Ellis Hawkins
President,
SSM Health
DePaul Hospital

Paul Ross
President,
SSM Health Foundation

Steven Scott
President,
SSM Health Saint Louis
University Hospital

Lisle Westcott
President,
SSM Health
St. Joseph Hospitals



A Grateful Patient

Mike Menne was diagnosed with Budd Chiari, a rare liver disease, in 2013. His primary care physician at the time was not experienced in treating this particular disease and encouraged Mike to visit a well-known, out-of-state academic hospital. After several lengthy trips to see doctors, and as his disease progressed, Mike knew he needed a local solution. The St. Louis hidden treasure Mike found was SSM Health Saint Louis University Hospital. The Gastroenterology and Abdominal Transplant teams would save his life.

Mike made many trips to and from the hospital, only to learn that a liver transplant would be his one chance to overcome Budd Chiari. At his very sickest, on January 26, 2017, Mike received his new liver. Eight hours in surgery, 13 days in the hospital, and a multitude of follow-up appointments later, 33-year-old Mike says his primary goal is to be a good husband to his wife Megan and a good father to his 2-year-old daughter, Olivia.

“I couldn’t pick up my daughter before the surgery. I could barely walk. I was afraid I wasn’t going to make it.” Mike and his wife, Megan, have since backpacked through the Grand Canyon and are building their life for the future.

When asked about his thoughts on the new SSM Health Saint Louis University Hospital, Mike said, “The people inside the hospital deserve the best facility in St. Louis. Everybody from the receptionist, lab technicians, nurses, and doctors really cared about me as a person. At other places, I’d speak with an assistant for 30 minutes and a doctor for three minutes.

It was just the opposite at SSM Health Saint Louis University Hospital. The doctors were always available, which meant a lot to me. I hadn’t considered SSM Health Saint Louis University Hospital as an option pre-transplant. For people who haven’t considered the hospital for themselves, maybe the new facility will raise awareness. The people inside are incredible and deserve the support. I know I’d like to give back.”

*“The doctors were always available,
which meant a lot to me.”*

Clinical Education

Because of you, *we get better.*

Nurses Learn Nurses Lead Scholarship Program—NL2020

The NL2020 scholarship program provides resources to nurses and nurse leaders earning their Bachelor of Science in Nursing degrees or other special certifications. Higher levels of education expose nurses to a wide range of competencies and improved patient outcomes. Your support of this program enables our SSM Health nurses to receive the support they need to continue their education. In 2018, 21 nurses received \$36,762 in tuition assistance towards their BSN and 14 nurses obtained their nursing certifications from an additional \$5,000 in support.

SIM Lab

The new SSM Health Training and Simulation Center will bring an exciting level of health care instruction to SSM Health professionals. Offering advanced educational opportunities and simulated real-life instruction, the Center will elevate the healing skills of SSM Health physicians and health care teams ensuring they are always prepared for any critical situation.

Medical Conferences

SSM Health Clinical Leaders facilitate day-long workshops for clinical staff who receive continuing medical education credits. Most organizations who provide this type of training charge a registration fee. SSM Health provides this employee and community benefit at no cost.

- Cardiology Conference (200 attendees)
- Medical-Surgical Conference (100 attendees)
- Neuroscience Summit (300 attendees)
- Orthopedic Conference (175 attendees)



Patient Care

At the *heart* of what we do.



Being in the hospital can be a stressful time for patients and their families. Our 11,500 talented employees and 2,500 staff physicians are part of an incredible legacy and have a deep-rooted commitment to providing personal and compassionate care. That is why we take the time to get to know our patients better as people, so we can treat them better as patients. Foundation support provides for emergencies and needs beyond traditional hospital patient care.



- Support groups/survivor celebrations
- Blankets and supplies
- Nutritional counseling
- Community education seminars
- Cancer screening kits
- Chapel services and resources

“This support group is the best thing I could’ve done for myself. The monthly speakers have been great, and I enjoy the bonding and information shared by different survivors.”

— SSM Health patient, breast cancer survivor

“I have not been in the hospital for 23 years. I was diagnosed with atrial fibrillation, an irregular heart beat that can lead to blood clots and stroke. Shortly after, I was diagnosed with congestive heart failure and was scheduled for a cardioconversion. I came in for Tikosyn administration and was very nervous about the procedure. The team at SSM Health St. Mary’s on Clayton Road explained the procedure to my husband and me and made us very comfortable with moving forward. When I arrived, the staff took over and I cannot say enough about their compassion and dedication. I was there for an entire week! I was overwhelmed by their knowledge, compassion and experience.”

— SSM Health St. Mary’s Hospital, heart patient

SSM Health Saint Louis University Hospital Forging a *healthier future.*

1903

SSM Health's founding congregation, the Sisters of St. Mary (now the Franciscan Sisters of Mary) welcomed Saint Louis University School of Medicine students into their hospitals for education and training.

1928

The University and the Sisters worked together to establish Saint Louis University's School of Nursing.

1933

The Sisters and SLU opened the hospital on South Grand Boulevard, today known as SSM Health Saint Louis University Hospital.



"This is one of those landmark projects. It goes back to the health of the community. It provides a healthy place to live, which is also good for business and good for the region."

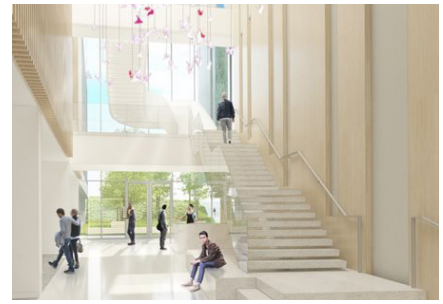
— John Alberici, Alberici Construction Board Chairman



The Commons



State-of-the-art patient rooms



Ambulatory Care Center

2015

As SSM Health assumes ownership of the hospital and SSM Health St. Louis and Saint Louis University expand their partnership, the long history of collaboration between these two Catholic organizations comes full circle.

2018

SSM Health St. Louis breaks ground and commits \$500 million to build a new replacement hospital and outpatient care center.

2019

As SSM Health's only academic medical center, SSM Health Saint Louis University Hospital provides safety-net care to some of our region's most at-risk residents. SSM Health is reinvesting in the St. Louis community it serves by building a new, state-of-the-art hospital in downtown St. Louis.



Capital Campaigns

You help us build *exceptional* care.

SSM Health St. Mary's Interventional Radiology Procedure Room Expansion

Interventional radiology is a surgical specialty which provides minimally invasive image-guided diagnosis and treatment of disease.

SSM Health St. Joseph Hospital - St. Charles

The Foundation received a \$75,000 gift from a St. Charles family foundation to install seven ceiling lifts throughout the hospital. Ceiling lifts are medical devices mounted to the ceiling and are used to help move patients safely about their room. They provide reduced risk of injury to patients and caregivers.

Kohler Auditorium Renovation

Development of high capacity meeting space for medical education, community partner collaboration, and employee meetings and training at SSM Health St. Mary's Hospital.

Internal Medicine Clinic Ophthalmology Equipment

Clinic provides eye exams and treatment for underinsured and uninsured population of St. Louis at SSM Health St. Mary's Hospital.

"SSM Health St. Joseph Hospital - St. Charles has taken care of my family for decades. No one wants to be in the hospital, but this team and this atmosphere are like a slice of heaven when you need it most."

— SSM Health St. Joseph Hospital - St. Charles and Lake Saint Louis, patient family member



SSM Health St. Joseph Hospital - St. Charles ceiling lift celebration



SSM Health Saint Louis University Hospital beam signing



SSM Health St. Louis Regional President, Candace Jennings, providing updates

Emergency Relief Fund

SSM Health employees *give back.*

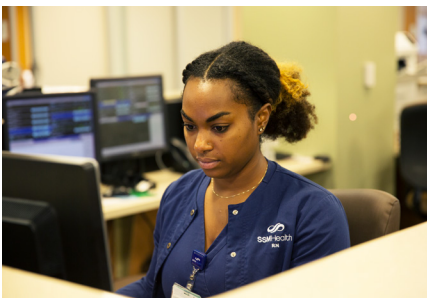
The Sister Mary Jean Ryan Employee Relief Fund is completely supported by SSM Health team members who give back to help fellow team members in financial hardship or crisis. Seventy-seven SSM Health St. Louis employees received over \$66,000 in support in 2018.



“My husband had heart failure three years ago. He was in the hospital for 17 days. It was very trying, but we made it. Then in 2017, a week before Thanksgiving, it happened again. I took him to the hospital again. He became unresponsive and then put on a ventilator. When it came time to bring him home, reality set in, and I wondered how we were going to make it. My husband was not able to work, but the bills just kept coming in. Then the touch of golden love came through! The help and support that I needed to make ends meet was from you.



“Some people who really need help can’t bring themselves to ask for it. Our teammates are like family, so it’s nice to know this fund is available. I wanted to be sure and contribute. Who knows, I might need it myself someday.”



— SSM Health St. Louis employee after contributing to the Emergency Relief Fund



Those are the things you look back on and are so grateful. I will cherish your thoughtfulness and gift forever.”

— SSM Health St. Louis employee, upon receiving aid from the Employee Relief Fund



Putting more gifts to *work.*

Gift Shops

You may support the Foundation by shopping! Your purchases at SSM Health Hospital Gift Shops support SSM Health Foundation. In 2018:

- Total revenue grossed over **\$1.8 million** from SSM Health St. Louis Gift Shop transactions
- Supported fundraising initiatives—Breast Care T-Shirt Sales, Employee Relief Fund
- Partnered with Hospital Auxiliaries to support events and local hospital needs

Foundation Grant Support

In the past year, SSM Health Foundation received over \$600,000 in foundation grant support for our ministries. Examples of these efforts include:

Beginning in 2017, funding from the **Gilead Sciences Frontlines of Communities in the United States (FOCUS) Program** supported SSM Health Saint Louis University Hospital to design and implement routine testing for infectious diseases—Human Immunodeficiency Virus and Hepatitis C—into their emergency department, which sees in excess of 50,000 patients per year. Thus far, the program has screened more than 3,700 patients for HIV and more than 3,400 for Hepatitis C, enabling 130 diagnoses for Hepatitis C and six diagnoses for HIV. Significantly, SSM Health Saint Louis University's Emergency Department has linked 80% of those diagnosed with needed care for the management and treatment of conditions and symptoms. In addition to fostering

collaborative relationships with Saint Louis University's SLUCare and the Infectious Disease Clinic at Washington University in St. Louis, this program directly impacts public health and wellness in our communities and is gaining momentum with other locations and community groups dedicated to infectious disease control.

For over 16 years, SSM Health St. Louis has received funding from **Susan G. Komen Missouri**. This support enables vulnerable populations, who are at elevated risk for breast cancer and breast cancer death, to receive needed screenings and diagnostic procedures necessary to identify cancer at the earliest stages. Furthermore, Susan G. Komen Missouri enables SSM St. Louis to offer patients access to a navigator and connection

to community support services related to screenings, diagnostics, treatment, and survivorship. In the past year, Susan G. Komen Missouri provided for 402 screening mammograms for patients with little to no insurance and 397 diagnostic procedures.

As a community partner for 19 years, the **St. Louis Men's Group Against Cancer** awarded SSM Health St. Louis funding to support nutritional assessments and dietary counseling sessions to uninsured and underinsured patients entering the cancer treatment continuum at our hospitals. Cancer treatments can cause changes in appetite, trouble swallowing, digestive issues, nausea, and weight gain or loss. Our nutritional counselors provide guidance to patients on healthy digestion, the prevention of malnutrition, and weight maintenance-support that is vital to a comprehensive cancer treatment plan, yet not covered by many insurances. St. Louis Men's Group Against Cancer support provided nutritional counseling to over 100 patients; and, SSM Health St. Louis Registered Dietitians (RDs) provided over 95 hours of face-to-face counseling through this effort.

SSM Health St. Mary's Hospital is home of The MOMS Line. The MOMS Line is a 24-hour "warm" line where moms are encouraged to leave a message and calls are returned

within 24 hours. The MOMS Line program employs a peer support model to identify women with behavioral health needs and connect them with area resources, postpartum peer coaching, and regular group support opportunities for pregnant and postpartum women with mild to moderate depression and anxiety needs. MOMS Line Support Groups, which also feature a peer support model, provide women with a safe place to explore their mood, anxiety, and the stressors facing them as a parent. We offer these support groups regularly at SSM Health St. Mary's Hospital - St. Louis, SSM Health SSM Health St. Clare Hospital - Fenton, Kangaroo Kids, and Jamaa Birth Village. The MOMS Line is supported in part by **Generate Health**; and, in late 2018, SSM Health St. Louis began working with the **Wayne C. Kaufmann Charitable Foundation** to broaden the availability of peer-based perinatal services and trainings and to increase the availability of support groups throughout the area. This new partnership will allow SSM Health St. Louis to reach even more women facing behavioral health challenges and connect them with other St. Louis perinatal behavioral health partners, who are dedicated to serving women with these unique needs. Last year, the MOMS Line impacted over 465 women with services and information.

MILESTONES

- Consolidation of all the foundations on January 1, 2018, combining all assets and forming a new regional Board of Trustees
- Re-launched the annual gift and grateful patient programs
- Developed enhanced corporate partner program providing meaningful ways for companies to contribute to programs and services
- Celebrated over 1,100 employees giving back through the SSM Health St. Louis Employee Appeal campaign
- Created Young Leaders of SSM Health Foundation - St. Louis introducing young professionals to the SSM Health St. Louis ministries and offering ways to get involved in fundraising
- Launched SSM Health Foundation Ambassador program consisting of SSM Health clinical professionals who attend informational gatherings, provide fundraising referrals and introductions, and help deliver consistent foundation/hospital communication throughout the region

Benefactor & Community Engagement

St. Louisans *lead by example.*

Our Benefactor and Community Engagement campaign involves stewardship activities with current benefactors, sharing the SSM Health Foundation mission with potential donors in the community, raising program awareness, and education of community health needs and resources.

**\$4.1 million in 2018
total contributions**



SSM Health DePaul Hospital Gala

More than 300 corporate and community leaders and guests gathered at the Four Seasons Hotel, St. Louis recognizing physician leaders and patient success stories, raising funds for SSM Health DePaul Hospital.





Nearly \$145,000 raised in 2018 from Auxiliaries at SSM Health DePaul Hospital, SSM Health St. Clare Hospital, and SSM Health St. Joseph Hospitals.



SSM Health Foundation Open

Our annual golf tournament at Norwood Hills Country Club provided a day of golf with local food and beverages on the course for nearly 200 golfers. This activity benefits SSM Health St. Louis greatest needs.



A Not So Silent Night with Cedric the Entertainer

Hosted by Cedric the Entertainer at the Chase Park Plaza Hotel, over 350 guests came together for an entertaining evening of food and laughs. Proceeds of the event went to SSM Health St. Mary's Hospital women's health initiatives.



Our Team

Paul R. Ross
President

Kim Cadle
Executive Assistant

Amy H. Collard
Director,
Foundation Operations

Cindy Woodley
Director,
Auxiliaries & Gift Shops

Kristy Barry
Foundation Coordinator

Iris Calloway
Corporate Giving Officer

Sarah J. Jennings
CFRE, Director,
Corporate & Foundation Giving

Sean McCaffrey
Director,
Annual Giving & Grateful Patients

Dawn Van Houten
Major Gift Officer

Melissa Smith
Development Services Specialist

Theresa Mitchell
Prospect Research Coordinator

To give, go to givetossmhealth.org
or call (314) 523-8044.



A shared courage. A common *good.*

12312 Olive Boulevard, Suite 100
St. Louis, MO 63141